

RHONDA Lounge

Design: Luca Signoretti



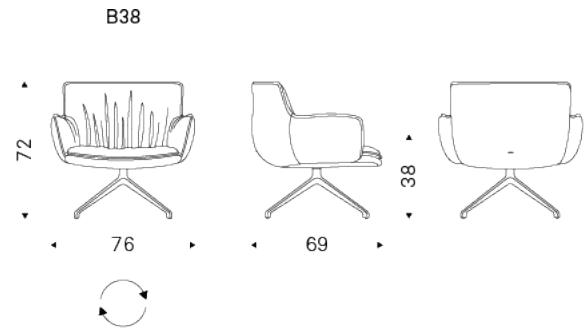
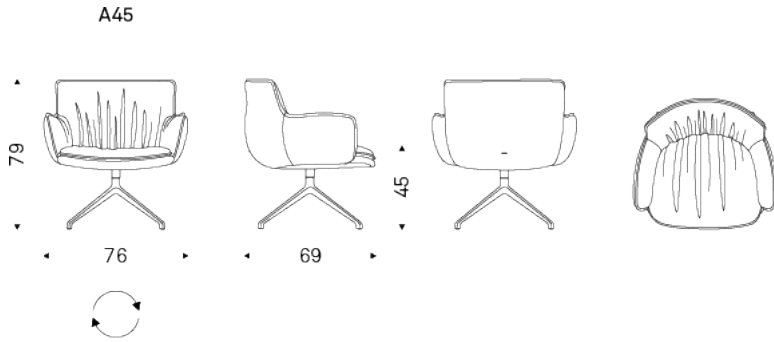
Product description

Swiveling armchair with 4 spokes base in titanium (GFM11), bronze (GFM18), graphite (GFM69), pearl (GFM70) or black (GFM73) embossed lacquered aluminium. Cover in fabric, micro nubuck, soft leather or synthetic leather as per sample card. The cover is not removable. Seat available in two different heights.

RHONDA Lounge

Design: Luca Signoretti

Dimension

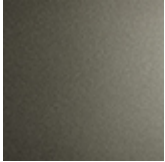


RHONDA Lounge

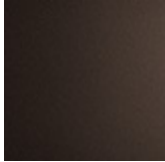
Design: Luca Signoretti

Finishes: base

metal



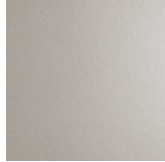
GFM11 titanium embossed



GFM18 bronze embossed



GFM69 graphite embossed



GFM70 pearl embossed



GFM73 black embossed

Finishes: upholster

soft leather



971 BIANCO 937 PALLADIO 972 CANOVA 947 OYSTER 959 ICE 939 NYMPH 949 CENERE



951 CASTORO 993 ARTICO 938 DAKOTA 995 NARDÒ 983 ARGILLA 948 LINO 969 CASHMERE



945 SAFARI 950 TORTORA 960 BRUNO 942 FANGO 946 MARRONE 988 TABACCO 952 SMOKE



953 ARDESIA 977 PIOMBO 956 ATLANTICO 981 BISCOTTO 982 COGNAC 996 SIENA 994 CANYON



943 MOKA 891 TESTA DI MORO 944 BORDEAUX 989 ROSSO CORSA 973 NERO 987 SHERWOOD 940 NAVY



974 CAPRI

fabric



synthetic leather



micro nubuck



glove soft leather

